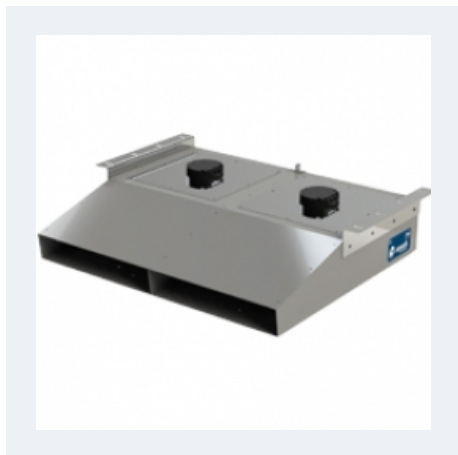


## SYBILO-S EEC



### CENTRIFUGAL JET FAN WITH EC MOTOR

#### MANUFACTURING FEATURES

Low profile jet fan for comfort use.

Galvanized steel sheet casing.

Self-cleaning impeller with back curved (backward) blades of high performance and single inlet, direct driven. Dynamically balanced to minimize noise and vibration. Aluminium plate impeller.

High efficiency (IE5), low noise external rotor EC motor. Speed control through a 0-10V or PWM signal. Single-phase 230V 50 / 60Hz power supply. IP44 motor and class B insulation.

#### APPLICATIONS

Impulse ventilation in premises.

Working temperature range from -20°C to 60°C.

## Accessories



AVT



REGC

## Technical data

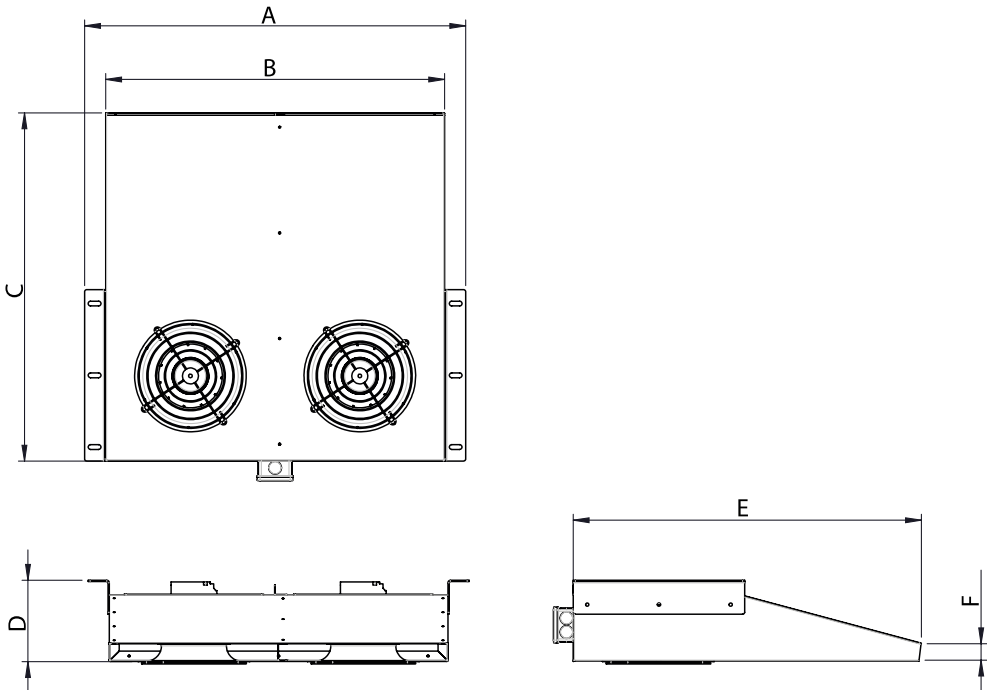
### Single-phase motor

| Code      | Model            | R.P.M. | Rated I.<br>A 230V | Rated<br>power<br>kW | Max.<br>Airflow<br>m <sup>3</sup> /h | Sound<br>db (A)** | Weight<br>kg | Connect.<br>diagram |
|-----------|------------------|--------|--------------------|----------------------|--------------------------------------|-------------------|--------------|---------------------|
| SYBSEC18N | SYBILO-S 18N EEC | 2500   | 1x2                | 0,15                 | 2.500                                | -                 | 28           | 1                   |

**Notes:**

\*\* Total sound pressure level at the point of maximum flow measured in dB(A) in the suction measured in free field at a distance of 6m from the source


# Dimensions



| Model            | A   | B   | C   | D   | E   | F  |
|------------------|-----|-----|-----|-----|-----|----|
| SYBILO-S 18N EEC | 956 | 850 | 873 | 204 | 573 | 42 |

## Wiring diagram

### Wiring diagram N° 1

| Nº | Signal<br>Señal | Colour<br>Color                | Specification<br>Especificación   |
|----|-----------------|--------------------------------|---|
| 1  | L               | Brown<br>Marrón                | AC 220V/50Hz  |
| 2  | N               | Blue<br>Azul                   | AC 220V/50Hz  |
| 3  | Pe              | Yellow-Green<br>Amarillo-Verde |  |

| Nº | Signal<br>Señal | Colour<br>Color    | Specification<br>Especificación   |
|----|-----------------|--------------------|---|
| 1  | GND             | Blue<br>Azul       |  |
| 2  | Vsp             | Yellow<br>Amarillo | 0-10 V/PWM  |
| 3  | Vcc             | Red<br>Rojo        | DC 10V  |
| 4  | FG              | White<br>Blanco    | 1 Pulse/R   |

CHARACTERISCTIC CURVE

1 SYBILO-S 18N EEC

AIR FLOW - PRESSURE